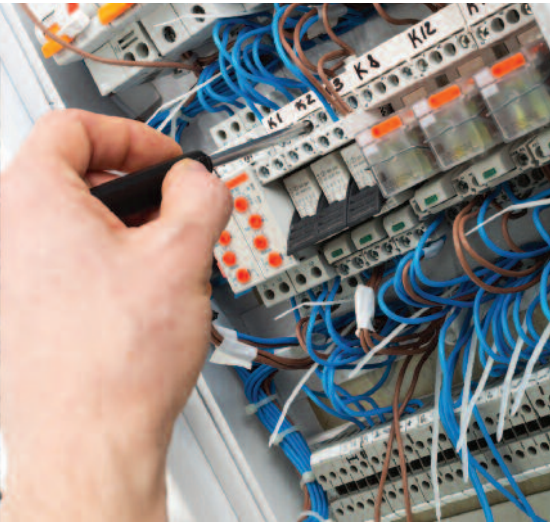


Study Programmes

Electrical Level 3



TTE are the UK's leading technical training provider.

We have specialist technical equipment, facilities and expertise that are just not available elsewhere and strong links with over 200 companies operating in the Oil & Gas, Manufacturing, Engineering and Petrochemical Industries.

TTE Study Programmes:

- **Improve** your chances of obtaining a place on an Apprenticeship in the future
- Help you gain **academic qualifications** while studying in a realistic work environment giving practical work experience
- Help you **improve** your Maths and English grades

TTE Offers:

- **Subsidised hot meals**, including breakfast and lunches
- Access to a **travel to work fund**, based on individual status
- Access to **bursary scheme**, if applicable



To apply call **01642 770337** or email **recruitment@tte.co.uk**
www.tte.co.uk

Study Programmes

Electrical Level 3

Course

Pre-qualification requirements: GCSE grade A-C in Science, Maths and English.

Example course content:

- Engineering environment Health & Safety
- Organisational efficiency and improvement
- Computer aided design techniques (CAD)
- Electrical and electronic principles
- Programmable logic controllers
- Electrical inspection, testing and commissioning
- Electrical maintenance in buildings
- Installation of electrical equipment

Career Opportunities

Electricians are typically employed by companies undertaking domestic wiring installations or electrical contract companies who are commissioned to install large electrical equipment for industrial plants. Electrical Technicians tend to focus on the maintenance and repair of industrial equipment such as transformers, generators, turbines and compressors. There are employment prospects across a wide variety of roles and working environments and many opportunities to specialise into fields such as high voltage or hazardous areas which can lead to overseas or offshore employment.

Progression:

On completion of this course you can progress to an Apprenticeship, Further Education or Employment (semi-skilled).



Main Aim	EAL Level 3 Diploma in Electrical and Electronic Engineering Technology OR EdExcel Level 3 BTEC Subsidiary Diploma in Engineering
Enrichment	Trade related practical workshop hands-on modules - ICT Functional Skills - Personal, Learning and Thinking Skills, employment rights and responsibilities
Work Experience	Up to 10 weeks placement with an employer
Course Duration	550-600 hours from September to July
Attendance Times	5 days over two weeks/8:30-15:45 ('off the job')
Holidays	12 weeks
Pre-qualification Requirements*	GCSE grade A-C in Science, Maths and English

*Please contact us for specific details of accepted science GCSEs

To apply call **01642 770337** or email **recruitment@tte.co.uk**
www.tte.co.uk