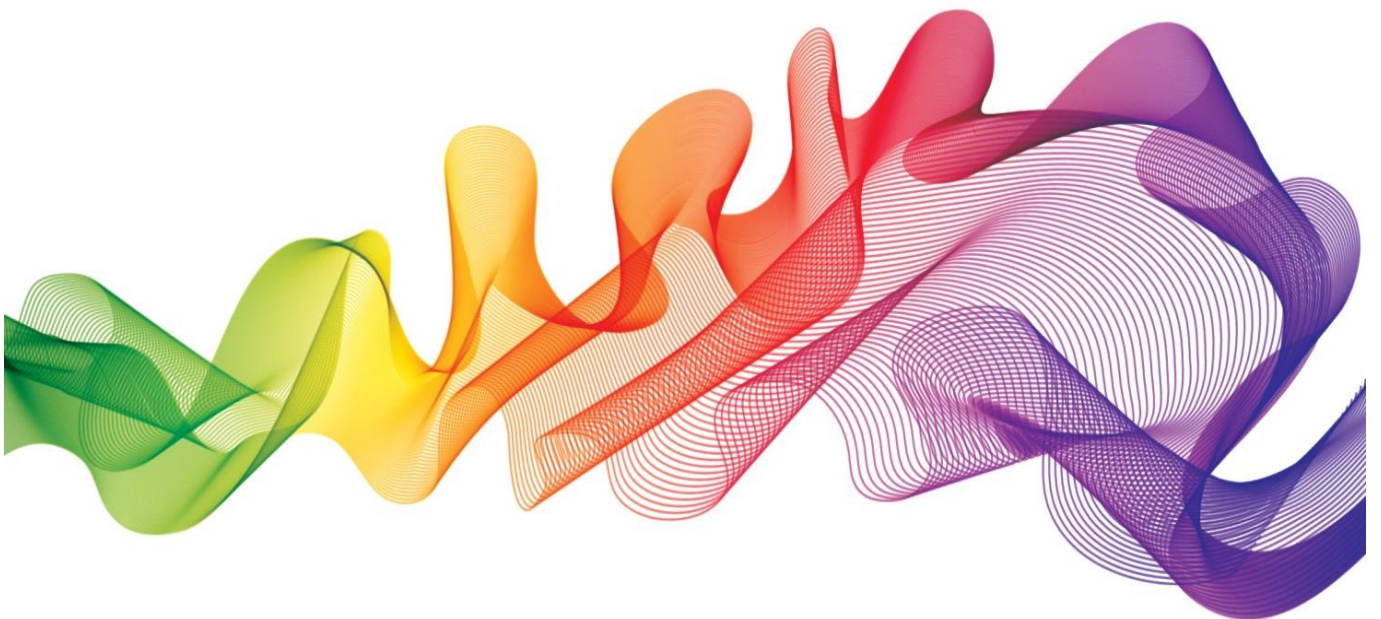


# Environmental & Sustainability Policy



**Contents**

**Page 2**

**Environmental & Sustainability Policy**

**3**

## Environmental & Sustainability Policy

The TTE Technical Institute (TTE) recognises that business activities undertaken by the organisation have the potential to affect the environment locally, nationally and globally. The affect on the environment can be positive or negative.

TTE can contribute positively towards the conservation and protection of the environment. We design and develop training programmes and courses. Where appropriate and feasible, we include environmental matters within course material and promote understanding of environmental subjects within delivery. These considerations extend to plant, equipment, materials and waste either utilised or produced during installation, delivery, commissioning, completion.

TTE has resolved to improve its own environmental and sustainable practices and in doing so will actively promote awareness of environmental responsibilities among staff and learners and seek to reduce any negative impact upon the environment as far as reasonably practicable.

The purpose of this Environment & Sustainability Policy is to ensure that in the conduct of our business activities TTE will endeavour to limit any adverse effects on human and physical environments, and on ecological systems. We will seek to ensure compliance with all current legislative requirements, and adopt a strategic approach to addressing sustainable development issues by considering the economic, social and environmental implications of our business activities and developments. It has been communicated within the company and will be made available to interested parties. It will be reviewed annually.

### OUR AIMS

The TTE Technical Institute (TTE) aims to understand the impacts on the environment of its business activities and operations. TTE aims to find solutions to environmental problems by adopting sound principles and best practice, both within its immediate surroundings and in the wider community. TTE accepts responsibility to demonstrate environmental protection and enhancement through appropriate teaching and institutional practice.

Our aims and objectives are a commitment to improve the environment and our environmental performance. We will fulfil our compliance obligations as a minimum. In order to provide an effectively controlled environmental management system (EMS) and service, we are committed to continual improvement and will conduct a constant review which enhances our environmental performance. Objectives, having been established, are regularly reviewed by management to determine effectiveness and progress in addition to any actions required should there be deviation to or from them. They are consistent with our strategic plan and business model. The scope is the same as that detailed within our Quality Policy.

We aim to protect the environment by:

- Preventing pollution
- Controlling and reducing emissions to the environment.
- Focusing on energy consumption and in particular the reduction in electricity.
- Recycling, re-using and reclaiming materials to minimise waste to landfill
- Complying with legislation, regulations and relevant codes of practice
- Educating staff, learners and apprentices to follow a hierarchy relating to impact in the following order – alleviate, substitute with better options, reduce or control.

The TTE Environmental and Sustainability Policy involves all staff and learners and seeks to:

- Recognise that the minimum acceptable level of environmental performance is that required by UK Environmental (and other) Legislation.
- Promote energy efficiency and responsible energy management.

- Promote and manage the responsible use of water and support the conservation of water resource initiatives.
- Promote waste minimisation and reduce the environmental impact of waste through beneficial recycling opportunities.
- Reduce the pollution of air land and water where practicable.
- Avoid the unnecessary use of hazardous materials and processes and take all reasonable steps to prevent damage to the environment where such materials are essential in use.
- Promote the visual amenity of all TTE Training Centres through the design and location of buildings and structures and through the enhancement of its gardens and grounds.
- Provide environmental training for staff and learners and promote general awareness of the environmental and sustainability policy to all.
- Support research and development activities aimed at improving TTE's environmental performance.
- Encourage the use of public transport and the provision of facilities for the disabled, pedestrians and cyclists.
- Promote sustainability & sustainable development in our activities and developments.
- Support the use of products and services of suppliers whose own environmental policies are in accord with TTE.
- Embed sustainability in to the curriculum, programme delivery, lesson observations ,SARs and staff appraisals
- Ensure social well being by managing health and safety, promoting good health and managing risks to staff and learners.
- Ensure economic well being by managing finances and financial risks thereby ensuring continuity and stability.
- Promote local purchasing of products and services where practicable, to support the local economy and therefore the economic well being of the current and future users of organisation.
- Sourcing materials and goods which are deemed to be the best environmental option available including considerations that can confirm procurement from ethical, non-polluting, socially responsible and in accordance with declaration to uphold requirements relating to modern slavery and conflict materials principles.
- Being a good neighbour – always listening carefully to neighbourhood comments and complaints and manage those positively.

## **MONITORING OUR PROGRESS, EVALUATING SUCCESS – CONTROLLING THE PROGRAMME.**

The Board of Directors have the responsibility for the monitoring and evaluation of this policy.

We have developed an aspect and impact register which identifies significance and then an environmental management programme of actions where the impact is considered significant. The Group Health, Safety, Security, Environment and Facilities (GHSSEF) Manager is responsible for the programme. He works closely with the Compliance Manager to manage the EMS.

We have included within our system measures to control abnormal and emergency situations.

It is our aim to also consult with and communicate our Policy to our Client and their representative's, our sub-contractors, our suppliers and all persons working for or on behalf of the organisation, to promote environmental awareness, to gain their support to meet our aims.

All employees are encouraged to participate in the improvement to and maintenance of the environmental performance and to assist with achievement of the objectives. They are given training, instruction and guidance to ensure that they fully understand their roles within it, the directives set by it and the competence expected.

## **WORKING IN PARTNERSHIP**

We will consult with Local and National Government bodies, enforcing and regulatory authorities and specialists to seek advice and assistance towards achievement of our environmental management programme to its full potential. We will,

at all times, comply with regulations, legislation, codes of practice and other requirements associated with the Company and its' operations. Where no laws, regulations or codes of practice exist, we will develop our own standards to allow for the best practicable and financially viable environmental option, not entailing significant and detrimental costs to the Company, whilst considering public, local and interested parties opinions.



Steve Grant  
Group Managing Director  
September 2017

